

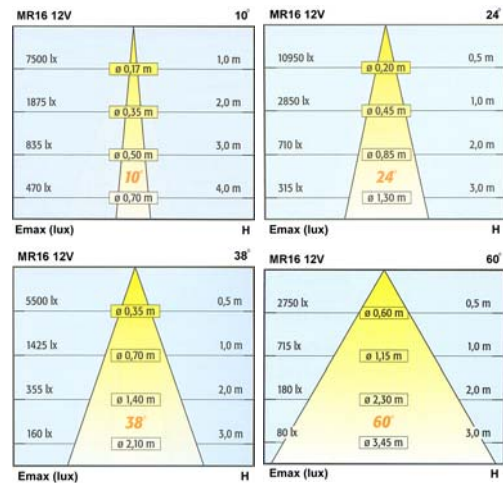
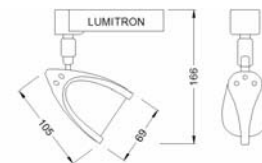
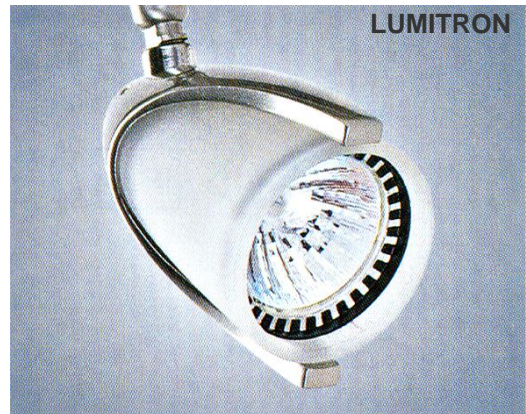
**LMTL - 49**

**MR 16 - Halogen Track Light / Spot Light**

A mini track / spot light luminaires for indoor use, employs low voltage halogen lamp MR16. Lumitron's LMTL-49, is suitable for decorative interiors, display windows, shops, showrooms, exhibition halls, department stores, and other commercial areas.

**Specifications**

- Housing: corrosion resistant die cast aluminium body with polyester powder coating finish in white, black, or silver color. Other color available on request.
- ☐ -WH: white color
- ☐ -BK: black color
- ☐ -SV: silver color
- Transformer: built-in type, accommodates 220Vac / 12Vac transformer.
- Lamp beam angle 10°, 20°, 30°, and 40°. Recheck lamp specifications.
- Suitable for 12V MR16 20W up to 50W.
- Lampholder: GX5.3, ceramic type, VDE approved.
- Standards and Conformities: DIN, VDE, IEC, Class I Electrical.
- Installation/Mounting: track or surface mounting.



**Ordering Information**

| Lumitron Ref.  | Lamp Type | Beam Angle | Color Temp. | Base  | Remark |
|----------------|-----------|------------|-------------|-------|--------|
| LMTL-49-20MR16 | MR16 20W  | 10°-40°    | 3,000°K     | GX5.3 |        |
| LMTL-49-35MR16 | MR16 35W  | 10°-40°    | 3,000°K     | GX5.3 |        |
| LMTL-49-50MR16 | MR16 50W  | 10°-40°    | 3,000°K     | GX5.3 |        |