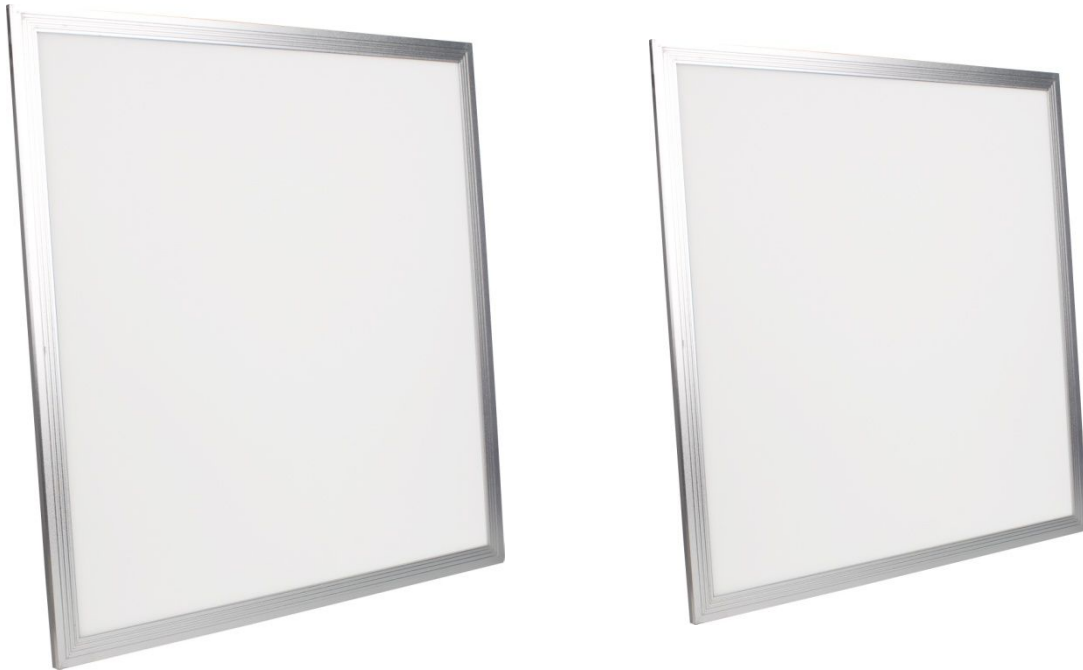


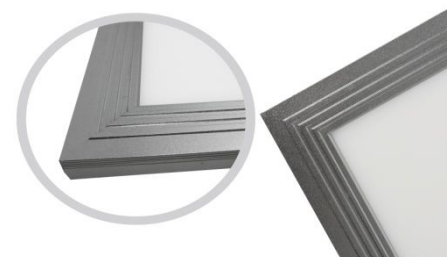
ITPL-1
LED Panel Light



Energy Saving Lighting 

LUMITRON REF.	ITPL-1-600x600	
Power	40W	
Input Voltage	100-240VAC	
Initial Flux	Warm White	2,230-2,600Lm
	Natural White	2,350-2,700Lm
	Daylight White	2,450-2,800Lm
Input Voltage	100-240VAC	
Power Factor	≥0.9	
CRI	≥75	
Operation Temperature	-20°C ~+45°C	
Color Temperature	Warm White	2,800-3,200K
	Natural White	4,000-4,500K
	Daylight White	5,800-6,500K
Beam Angle	120°	
Size	598x598x12.5mm	
Installation	Recessed	
	Suspended	
	Surface Mounted	

40W LED	100-240 VAC	CRI >75	Operation -20°C +45°C
Dimmable 0% 100%	CE	ENERGY SAVING	120°
3000K Warm White	4000K Cool White	6500K Daylight	

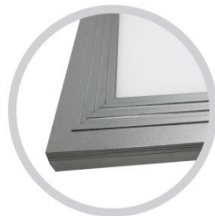
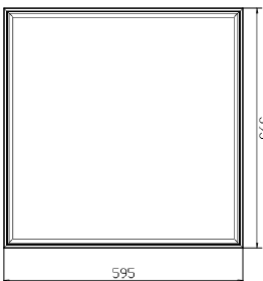


ITPL-1
LED Panel Light



Energy Saving Lighting

100-240 VAC
CRI >75
-20°C ~ +45°C Operation
0% Dimmable 100%
CE
ENERGY SAVING
120°
3000K Warm White
4000K Cool White
6500K Daylight



LUMITRON REF.	ITPL-1-36W-600x600	ITPL-1-45W-600x600	ITPL-1-54W-600x600
Power	36W	45W	54W
Input Voltage	100-240VAC	100-240VAC	100-240VAC
Initial Flux	2,880±5%	3,600±5%	4,320±5%
Input Voltage	100-240VAC	100-240VAC	100-240VAC
Power Factor	≥0.9	≥0.9	≥0.9
CRI	≥82	≥82	≥82
Working Temperature	-20°C ~+45°C	-20°C ~+45°C	-20°C ~+45°C
Color Temperature	3000K, 4000K, 5000K, 6000K		
Beam Angle	120°	120°	120°
Size	598x598x9mm	598x598x9mm	598x598x9mm